

A/W 14/15 women's catwalks: New York stylefile

By Sue Evans, WGSN, 13 February 2014

The autumn/winter 2014/15 season kicked off in New York with a full schedule of new names and long-established designers, all of whom opted for a new relaxed dress code.

All A/W 14/15 women's catwalks stylefile reports

The look taps into the mood of the moment, with comfort and cocooning high on the agenda at most shows as designers moved away from constricting and structured looks and into soft, cocooning layers.

This mood permeated everything from tactile fabrics to the statement outerwear that spanned throw-on bathrobe coats in luxe wools to cosy quilting, parkas and fur chubbies. In fact, cosy outerwear and knits look set to be the main product areas for next winter.

One of the most exciting new looks was for mismatched layering, with dresses, skirts and large tunic tops worked over easy-fit pant shapes. We saw volume also coming through in longer dirndls and midskirts – the default bottomweights of the week – plus big knits and trapeze-line tops.

* WGSN ANALYSIS

- Next winter is all about a fresh sense of easy volume
- Layering takes on a new emphasis with mismatched skirts, dresses and pants teamed with big knits
- Tactile fabrics help to reinforce the mood for layered cocooning
- Outerwear and knits are the two main product areas for autumn/winter 2014/15

Layer cake



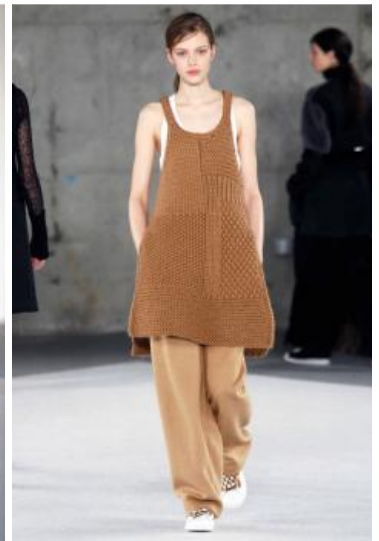
Steven Alan autumn/winter 2014/15



Derek Lam autumn/winter 2014/15



Tibi autumn/winter 2014/15



Edun autumn/winter 2014/15

Layering is one of the strongest trends that we saw emerge in New York with a play on mismatched proportions, teaming tunic knits over soft skirts and dresses over easy pants in a real switch from the city's atypical sleek and body-con looks.

Red hot



Helmut Lang autumn/winter 2014/15



Donna Karan autumn/winter 2014/15



Ruffian autumn/winter 2014/15



Hache autumn/winter 2014/15

2014 is the Chinese Year of the Horse, and Chinese red certainly put a kick into the latest runways as designers opted for the drama of pure crimson for everything from knits to cocooning outerwear and simple dresses. A highly commercial colour story that has been missing from the retail sector for several seasons.

Snow white



Narciso Rodriguez autumn/winter 2014/15



Edun autumn/winter 2014/15



Helmut Lang autumn/winter 2014/15



Victoria Beckham autumn/winter 2014/15

The big contrast to the season's vivid reds sees winter white emerge as one of the important stories, bringing an understated sense of luxe dressing into play, especially in premium cashmeres and lofty brushed yarns.

Oxblood



Lacoste autumn/winter 2014/15



Tome autumn/winter 2014/15



DKNY autumn/winter 2014/15



Ostwald Helgason autumn/winter 2014/15

Oxblood tones were strong at the pre-fall collections and emerged as an ongoing trend for autumn/winter 2014/15, working as part of a rich, autumnal palette or in layered mismatched fabrics, creating a deep, saturated palette of nuanced colour.

Pine forest



Derek Lam autumn/winter 2014/15



ICB autumn/winter 2014/15



Tia Cibani autumn/winter 2014/15



Derek Lam autumn/winter 2014/15

Teal and petrol blues were ongoing colour trends in New York, but more commercial by far were these rich pine-greens, an evolution of the emeralds we have seen for the past few seasons. Work the look on both matte fabrics and high-shine finishes to create an intense, saturated look.

Shades of brown



Prabal Gurung autumn/winter 2014/15



Desigual autumn/winter 2014/15



Kenneth Cole autumn/winter 2014/15



Anna Sui autumn/winter 2014/15

Watch for brown emerging as a colour of choice for next winter as part of the autumnal palette that includes oxblood and pine. Work nuanced layers of colour together for maximum impact, perhaps also with accents of orange or tan to modify the look.

Winter pastel



Derek Lam autumn/winter 2014/15



Rebecca Taylor autumn/winter 2014/15



DKNY autumn/winter 2014/15



Lacoste autumn/winter 2014/15

A low-key trend, but one that our Colour team are tracking as a new level for next winter – and one that we highlighted on the menswear runways, with dusty rose-pinks and whitened pale blues or pistachio – all perfect to team with soft grey or black.

Quilted



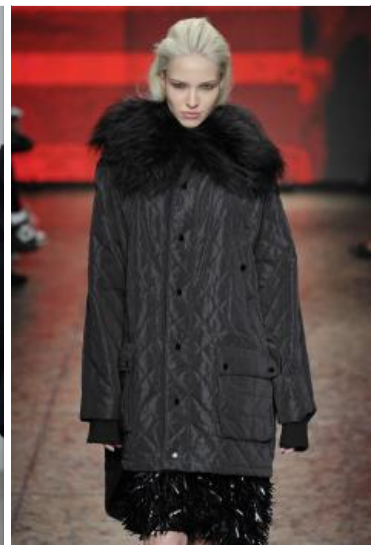
Donna Karan autumn/winter 2014/15



Milly by Michelle Smith autumn/winter 2014/15



Tess Giberson autumn/winter 2014/15



DKNY autumn/winter 2014/15

The season's mood for cosy cocooning sees quilting take on a new resonance, from Donna Karan's duvet-style squishy luxe coats to quilted sweats and weightless padded outerwear with diamond-quilted effects looking the most fresh.

Checkmate



Creatures of Comfort autumn/winter 2014/15



Rodarte autumn/winter 2014/15



Karen Walker autumn/winter 2014/15



marc by Marc Jacobs autumn/winter 2014/15

Heritage plaids and checks are another strong fabric trend, with large oversized blanket checks worked on coloured grounds – think bright reds and blues or tonal browns for everything from simple shirts and chemise dresses to all-weather outerwear.

Patterned furs



VFiles - Hyein Seo autumn/winter 2014/15



Libertine autumn/winter 2014/15



Altuzarra autumn/winter 2014/15



Custo Barcelona autumn/winter 2014/15

Fur was everywhere on the New York runways, in line with the season's mood for cocooning and a luxe, tactile touch. Look out for intarsias and colourful pieced effects making this a real fashion statement for playful jackets and casual gilets.

Gilding the lily



Tracy Reese autumn/winter 2014/15



Diane von Furstenberg autumn/winter 2014/15



Suno autumn/winter 2014/15



Ostwald Helgason autumn/winter 2014/15

The emphasis shifts to shimmer and shine – a nice contrast to the season's brushed wools and furs – with gilded sequins, Midas-touch lace, gold leathers and brocades.

A winter's tale



VFiles - Assk autumn/winter 2014/15



Ostwald Helgason autumn/winter 2014/15



Tracy Reese autumn/winter 2014/15



Tess Giberson autumn/winter 2014/15

Fabrics and colour may be reinforcing the mood for tactile cocooning, but one of the most outstanding print stories on the runways was for stark winter landscapes, mirroring the streets of New York with snowy treescapes, bare branches and cold winter skies.

Dark-grounded florals



Tracy Reese autumn/winter 2014/15



Honor autumn/winter 2014/15



J. Crew autumn/winter 2014/15



Vera Wang autumn/winter 2014/15

The florals we can expect to see blossoming this summer are evolving neatly into a winter palette with soft rose motifs accented on dark, romantic grounds. A core trend to combine with the new winter-pastel palette or to work as a monochrome story.

Spell it out



Karen Walker autumn/winter 2014/15



Mark McNairy autumn/winter 2014/15



Wildfox autumn/winter 2014/15



Libertine autumn/winter 2014/15

The trend for messages and slogans was an important look at the recent menswear shows, and womenswear followed suit with a raft of typography spelling out everything from brand names and political slogans to quirky wordplay. This is an ongoing trend for the junior's market.

Craft class



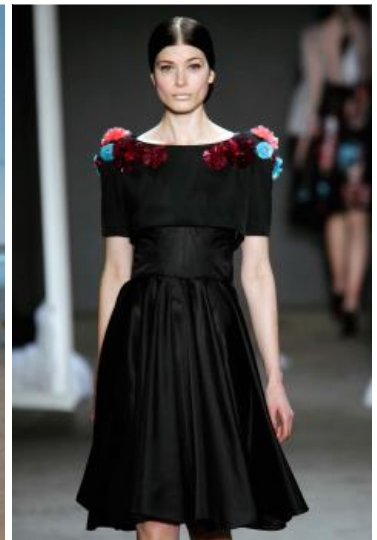
Rodarte autumn/winter 2014/15



Libertine autumn/winter 2014/15



Derek Lam autumn/winter 2014/15



Honor autumn/winter 2014/15

Handcrafted techniques are an emerging trend – one we highlighted for spring/summer 2014 and next winter's new menswear looks. It heralds a return to homespun, folkloric effects such as patchwork, crochet, appliqués and handcrafted decorative trims, often used in place of conventional print and pattern. A trend to watch.

Slouch coats



Tome autumn/winter 2014/15



Narciso Rodriguez autumn/winter 2014/15



Tia Cibani autumn/winter 2014/15



Josie Natori autumn/winter 2014/15

Outerwear promises to be one of next winter's most important classifications with a wide range of key looks. One of the easiest and most commercial trends is for the throw-on bathrobe or soft dressing-gown coat. Unstructured and full of louche elegance, this is a blank canvas for the season's luxe-touch wools and rich palette.

Soft belted coats



Raoul autumn/winter 2014/15



Milly by Michelle Smith autumn/winter 2014/15



Edun autumn/winter 2014/15



Vivienne Tam autumn/winter 2014/15

Overall coat shapes are unstructured, with dropped shoulderlines replacing tailored looks and easy volume tethered by a relaxed tie-belt – often set high up the body to create an elongated 'empire' line and balanced by a wide kimono sleeve.

Fur chubbie



Helmut Lang autumn/winter 2014/15



Oswald Helgason autumn/winter 2014/15



DKNY autumn/winter 2014/15



Anna Sui autumn/winter 2014/15

The fur chubbie ticks two of the season's emerging trend boxes: casual cocooning comfort and an emphasis on tactile 'touch-me-feel-me' finishes. The perfect item for playful faux-fur developments, capitalising on the textured furs that have had such commercial success this winter.

Deluxe parkas



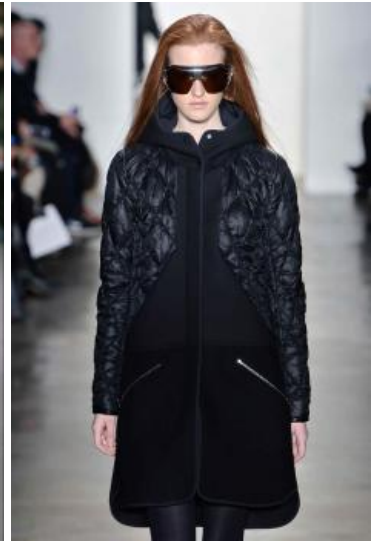
Pamella Roland autumn/winter 2014/15



Rodarte autumn/winter 2014/15



Alexander Wang autumn/winter 2014/15



Tim Coppens autumn/winter 2014/15

Sportswear looks are still on trend but manifest themselves in simple, luxe pieces next winter, with items such as the parka (reworked in premium fabrics including satin), metallic lamé effects, cashmere and soft quilting.

Capes



Delpozo autumn/winter 2014/15



Kate Spade autumn/winter 2014/15



BCBG Max Azria autumn/winter 2014/15



DKNY autumn/winter 2014/15

The season's mood for cocooning comfort puts the cape at the heart of outerwear for next winter, worked in luxe-touch wools, brushed mohairs or with pattern interest through heritage-blanket stripes and checks. Watch out for throws and serapes as part of the look.

Cagoules



Ostwald Helgason autumn/winter 2014/15



Rag & Bone autumn/winter 2014/15



Rebecca Taylor autumn/winter 2014/15



Kye autumn/winter 2014/15

The cosy, cocooning comfort of the cagoule makes it a key item as part of next winter's new casual-layered looks. We love the sense of rounded volume and the many fabric options – from fabric-blocking to leather and blanket wools – for silhouettes that almost act as a sweatshirt hybrid.

The leopard-print coat



Peter Som autumn/winter 2014/15



Kate Spade autumn/winter 2014/15



Hache autumn/winter 2014/15



Anna Sui autumn/winter 2014/15

More of a fabric story than a key item, designers opted for the playful look of the leopard-print coat with throw-on, edge-to-edge styling details and a go-anywhere sensibility that can be dressed-up or dressed-down, making this an essential item for all levels of the market.

Blousons



DKNY autumn/winter 2014/15



Yigal Azrouël autumn/winter 2014/15



J. Crew autumn/winter 2014/15



Hache autumn/winter 2014/15

Despite reports of poor sales from many high-street retailers, the blouson continues to be a main item for many designers. The newest look goes for a more forgiving elongated silhouette, making it something of a parka hybrid. Elsewhere, expect to see soft quilted shapes, faux-fur updates and classic leather variations.

Pinafores



Helmut Lang autumn/winter 2014/15



Karen Walker autumn/winter 2014/15



A Détacher autumn/winter 2014/15



Creatures of Comfort autumn/winter 2014/15

Next winter looks set to be more about layered separates, but there were several new dress shapes on offer on the New York runways with designers flirting with simple pinafores, combining easy silhouettes with classic poloneck or turtleneck knits. Lengths veered from mid-thigh to midi, all teamed with ankle boots or flat, mannish brogues.

The trapeze dress



Made Houghton autumn/winter 2014/15



Sass & Bide autumn/winter 2014/15



A Détacher autumn/winter 2014/15



Zimmermann autumn/winter 2014/15

A new dress shape in New York, where we usually expect to see something sleeker and more defined. Instead, designers were looking at the ease of wide trapeze lines with rounded, cocooning shapes and wide kimono sleeves from a dropped shoulderline, often worked in luxe-touch wools or tactile brushed mohairs.

Matching sets



Raoul autumn/winter 2014/15



ICB autumn/winter 2014/15



Raoul autumn/winter 2014/15



Katie Gallagher autumn/winter 2014/15

The menswear runways were awash with matching coordinates – a trend picked up in New York with 'matchy-matchy' sets of casual separates incorporating simple shell-tops and matching skirts. The short circle skirt and cropped top is a new variation on the theme – a great look to develop for the juniors market. Elsewhere, the look is more sporty, with boxy tops and asymmetric wrapskirts.

Handkerchief hems



ICB autumn/winter 2014/15



Zero + Maria Cornejo autumn/winter 2014/15



Ostwald Helgason autumn/winter 2014/15



Richard Chai Love autumn/winter 2014/15

Love them or hate them, the under-the-radar trend for handkerchief hemlines has started to emerge as an important look for next winter, seen everywhere for asymmetric dress shapes for skirts and even cocooning cagoule tops.

Midi lengths



Delpozo autumn/winter 2014/15



Karen Walker autumn/winter 2014/15



Nanette Lepore autumn/winter 2014/15



Wes Gordan autumn/winter 2014/15

The midskirt looks set to finally hit the mainstream as designers built on looks first seen last winter. Silhouettes veered from full circles to soft dirndls and gentle A-lines, all with easy volume through the hem. The main look is for a soft lace or semi-sheer skirt teamed with a long chunky sweater.

The leather skirt



Parkchoonmoo autumn/winter 2014/15



Yigal Azrouël autumn/winter 2014/15



DKNY autumn/winter 2014/15



Vera Wang autumn/winter 2014/15

The leather skirt was the default bottomweight in a diverse number of collections, best worn in midi proportions – both softly tucked and slim pencil shapes – teamed with a long tunic knit or rounded fur chubbie or blouson.

Pleat it



Organic by John Patrick autumn/winter 2014/15



Victoria Beckham autumn/winter 2014/15



marc by Marc Jacobs autumn/winter 2014/15



Pamella Roland autumn/winter 2014/15

Everyone from Victoria Beckham to John Patrick was in love with pleated effects this season, offering yet another variation on the new midskirt proportions. This was best seen at marc by Marc Jacobs with his Victoriana-inspired tutu styling teamed with a chunky A-line knit.

The louche slouch pant



Rodarte autumn/winter 2014/15



Alexander Wang autumn/winter 2014/15



Rag & Bone autumn/winter 2014/15



Oscar de la Renta autumn/winter 2014/15

The mood for soft volume extended to the new pant shapes on offer: it's all about the new slouch pant, taken from menswear styling but given a feminine twist through fluid fabrics. Watch out for sporty 'paper bag' waists and drawstrings or the contrast of cargo pocket placements.

Wide & cropped



Creatures of Comfort autumn/winter 2014/15



Karen Walker autumn/winter 2014/15



Delpozo autumn/winter 2014/15



J. Crew autumn/winter 2014/15

The alternative pant shape draws on easy volume through the leg with soft full-legged shapes balanced by a cropped hemline. A main silhouette to team with wide boxy tops for a play on soft, layered volume.

Borrowed from the boys



Karen Walker autumn/winter 2014/15



Vera Wang autumn/winter 2014/15



Creatures of Comfort autumn/winter 2014/15



Tibi autumn/winter 2014/15

There were subtle masculine-feminine looks merging on the New York runways, but not in a signature tailored or uptight way. The new look is relaxed and easy-fit with soft jackets and wide-cropped pant shapes, making this a believable tailoring option.

Bunny boilers



Organic by John Patrick autumn/winter 2014/15



Steven Alan autumn/winter 2014/15



Hache autumn/winter 2014/15



Rag & Bone autumn/winter 2014/15

The soft boilersuit or overall is a new autumn/winter key item – very much in keeping with the mood for uniform dressing that permeated the menswear shows. It's all about practical and functional styling, and represents another variation on next winter's layered looks.

The fur top



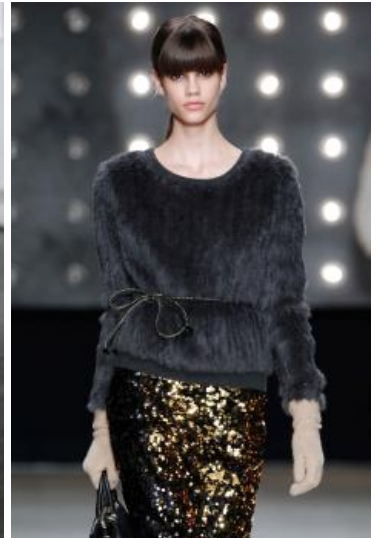
BCBG Max Azria autumn/winter 2014/15



J. Crew autumn/winter 2014/15



Kye autumn/winter 2014/15



Milly by Michelle Smith autumn/winter 2014/15

Cocooning shapes and plush, tactile fabrics combine in this standout look with the new luxe sweatshirt hybrid worked in 'touch-me-feel-me' furs. Consider this the move forward from this winter's highly successful plush-knit or eyelash yarns.

Trapeze tops



Tia Cibani autumn/winter 2014/15



Suno autumn/winter 2014/15



Creatures of Comfort autumn/winter 2014/15



Derek Lam autumn/winter 2014/15

We love the fact that New York loosened up this season and brought soft volume into play for everything from outerwear to these easy-bodied trapeze tops – a standout silhouette to work in soft-touch brushed wools and to team with full skirts or cropped pants.

The statement sweater



Prabal Gurung autumn/winter 2014/15



Tess Giberson autumn/winter 2014/15



marc by Marc Jacobs autumn/winter 2014/15



Alexander Wang autumn/winter 2014/15

Knitwear is the second-most important product area for next winter, with a whole raft of statement sweaters drawing in stitch structures for dimensional textured surfaces, coupled with big oversized shapes.

Tunic knits



Edun autumn/winter 2014/15



Helmut Lang autumn/winter 2014/15



Creatures of Comfort autumn/winter 2014/15



Lacoste autumn/winter 2014/15

The long tunic sweater is an alternative key shape – worked in soft-touch brushed yarns and with proportions worked almost into sweater-style dress shapes. It's all about volume next winter, and these tunic knits tick all the right boxes.
